



*Dear Parent,*

*At VTech® we know how important the first day of school is for your child. To help prepare preschoolers for this important event, VTech® has developed the **Ready, Set, School™** series of interactive toys.*

***Ready, Set, School™** features fun characters and inviting school themes that use technology to capture a child's attention and teach important preschool skills like spelling, counting and the alphabet. These vital skills are taught in a way that's both fun and highly engaging to maintain a child's interest. Children will also be introduced to fun school subjects such as art class, music class and even recess! With **Ready, Set, School™**, learning is fun from day one!*

*At VTech® we know that a child has the ability to do great things. That's why all of our electronic learning products are uniquely designed to develop a child's mind and allow them to learn to the best of their ability. We thank you for trusting VTech® with the important job of helping your child learn and grow!*

*Sincerely,*

*Your Friends at VTech®*

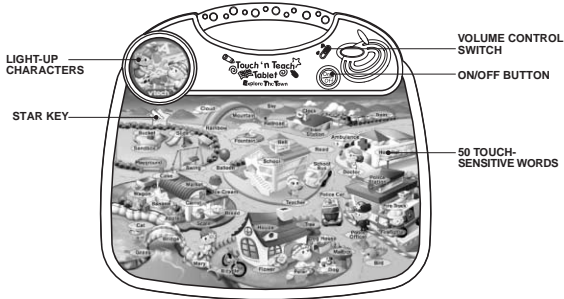
*To learn more about **Ready, Set, School™** and other VTech® toys, visit*

*[www.vtechkids.com](http://www.vtechkids.com)*

# INTRODUCTION

Thank you for purchasing the **VTech® Touch 'n Teach Tablet™** learning toy!

The **VTech® Touch 'n Teach Tablet™** learning toy educates children through the interactive technology present in the learning board. Your child will begin to learn basic vocabulary words and information which pertain to a general town center. Through object word association, recognizable musical tunes, and sound effects, your child will derive excitement and entertainment while learning important safety and educational material.



## INCLUDED IN THIS PACKAGE

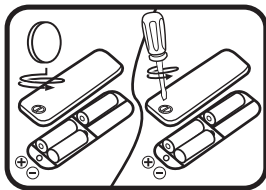
- One **VTech® Touch 'n Teach Tablet™** learning toy.
- One instruction manual.

**WARNING:** All packing materials such as tape, plastic sheets, wire ties and tags are not part of this toy, and should be discarded for your child's safety.

# GETTING STARTED

## BATTERY INSTALLATION

1. Make sure the unit is turned OFF.
2. Locate the battery cover on the bottom of the unit.
3. Install 3 new “AA” (LR 06) batteries following the diagram inside the battery box. (The use of new, alkaline batteries is recommended for maximum performance.)
4. Replace the battery cover.



## BATTERY NOTICE

- Install batteries correctly observing the polarity (+, -) signs to avoid leakage.
- Do not mix old and new batteries.
- Do not use batteries of different types.
- Remove exhausted or new batteries from the equipment when the unit will not be used for an extended period of time.
- Do not dispose of batteries in fire.
- Do not attempt to recharge ordinary batteries.
- The supply terminals are not to be short-circuited.
- Only batteries of the same and equivalent type as recommended are to be used.

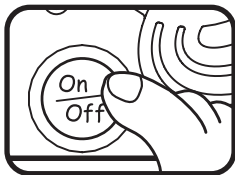
**WE DO NOT RECOMMEND THE USE OF RECHARGEABLE BATTERIES.**

# PRODUCT FEATURES

## 1. ON/OFF BUTTON

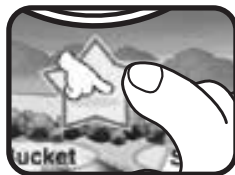
To turn the unit on, press the **ON/OFF BUTTON**. You will hear an opening melody and a friendly phrase.

Press the **ON/OFF BUTTON** again to turn the unit off.



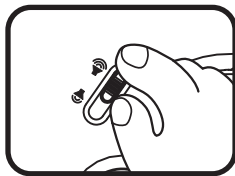
## 2. STAR KEY

To enter into the “activity mode” of the **Touch ‘n Teach Tablet™**, touch the **STAR KEY** located at the top left corner of the board.



## 3. VOLUME CONTROL SWITCH

Adjust the volume by sliding the **VOLUME CONTROL SWITCH** upwards for high volume and downwards for low volume.



## 4. AUTOMATIC SHUT-OFF

To preserve battery life, the **VTech® Touch ‘n Teach Tablet™** learning toy will automatically turn off after several minutes without input. The unit can be turned on again by pressing the **ON/OFF** button.

## 5. TOUCH-SENSITIVE AREA

Touch the words to hear different responses of the words or input your answer in the “activity mode”.



## ACTIVITIES

### Touch Mode

1. The **Touch 'n Teach Tablet™** will automatically begin with the "Touch Mode". Touch the word the first time and it will be identified.
2. Following touches will teach songs, fun safety facts and beginning letters for further educational value.

### Activity Mode

1. To enter “Activity Mode” you must press the **STAR KEY** located at the top left-hand side of the board. Upon pressing the **STAR KEY**, you will be given a hint that pertains to one of the objects highlighted in the town. The goal is to find the object correctly and touch the word to see if you are right or wrong. You will be given 3-4 questions per game after which the toy will automatically switch back to Touch Mode. You will be given a new set of hints each time you play the game.

2. To play another game, press the **STAR KEY** again. All hints given are heard in "Touch Mode" throughout numerous touches of a word. To improve upon your skills during game play, go back to "Touch Mode" to hear the hints again.

## Melody List

<u>Word</u>	<u>Song Name</u>
Railroad	I've Been Working on the Railroad
Bridge	London Bridge
Mountain	She'll Be Coming Round The Mountain
Peter	Where Has My Little Dog Gone?
Mary	Mary Had a Little Lamb
School bus	The Wheels On The Bus
Sky	Twinkle Twinkle Little Star
School	The Alphabet Song
Flower	You Are My Sunshine

# CARE & MAINTENANCE

1. Keep the unit clean by wiping it with a slightly damp cloth.
2. Keep the unit out of direct sunlight and away from any direct heat source.
3. Remove the batteries when the unit is not in use for an extended period of time.
4. Do not drop the unit on a hard surface and do not expose the unit to moisture or water.

# TROUBLESHOOTING

If for some reason the program/activity stops working, please follow these steps:

1. Please turn the unit **OFF**.
2. Interrupt the power supply by removing the batteries.
3. Let the unit stand for a few minutes, then replace the batteries.
4. Turn the unit **ON**. The unit should now be ready to play again.
5. If the product still does not work, replace with an entire set of new batteries.

If the problem persists, please call our Consumer Services Department at 1-800-521-2010 in the U.S. or 1-800-267-7377 in Canada, and a service representative will be happy to help you.



### **IMPORTANT NOTE:**

Creating and developing **Ready, Set, School™** products is accompanied by a responsibility that we at **VTech®** take very seriously. We make every effort to ensure the accuracy of the information which forms the value of our products. However, errors sometimes can occur. It is important for you to know that we stand behind our products and encourage you to call our Consumer Services Department at 1-800-521-2010 in the U.S., or 1-800-267-7377 in Canada with any problems and/or suggestions that you might have. A service representative will be happy to help you.

### **NOTE:**

This equipment has been tested and found to comply with the limits for a Class B digital device, pursuant to Part 15 of the FCC Rules. These limits are designed to provide reasonable protection against harmful interference in a residential installation. This equipment generates, uses and can radiate radio frequency energy and, if not installed and used in accordance with the instructions, may cause harmful interference to radio communications. However, there is no guarantee that interference will not occur in a particular installation. If this equipment does cause harmful interference to radio or television reception, which can be determined by turning the equipment off and on, the user is encouraged to try to correct the interference by one or more of the following measures:

- Reorient or relocate the receiving antenna
- Increase the separation between the equipment and receiver
- Connect the equipment into an outlet on a circuit different from that to which the receiver is connected
- Consult the dealer or an experienced radio/TV technician for help